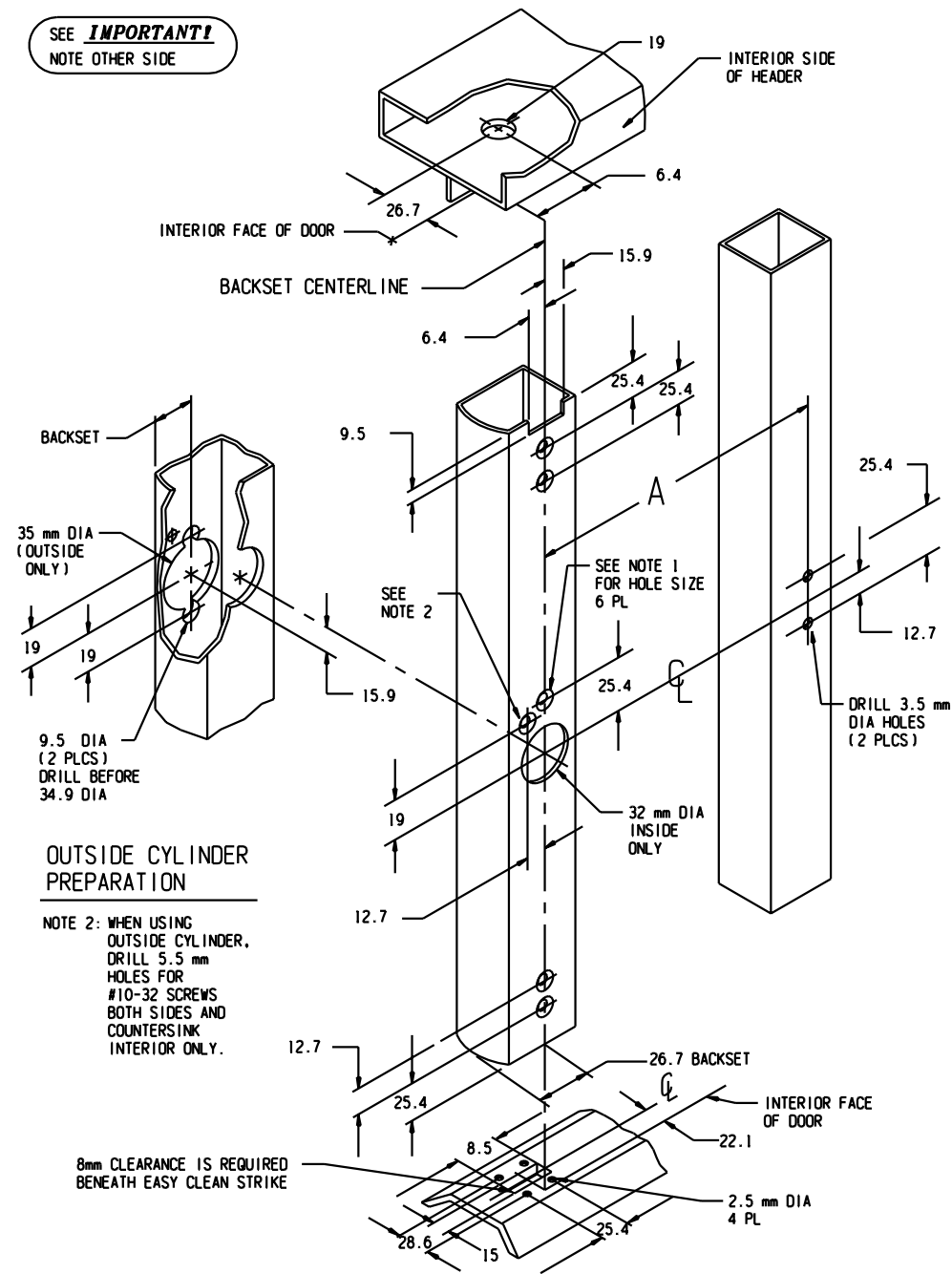


PREPARATION

ALL DIMENSIONS ARE IN MILLIMETERS

SEE **IMPORTANT!**
NOTE OTHER SIDE



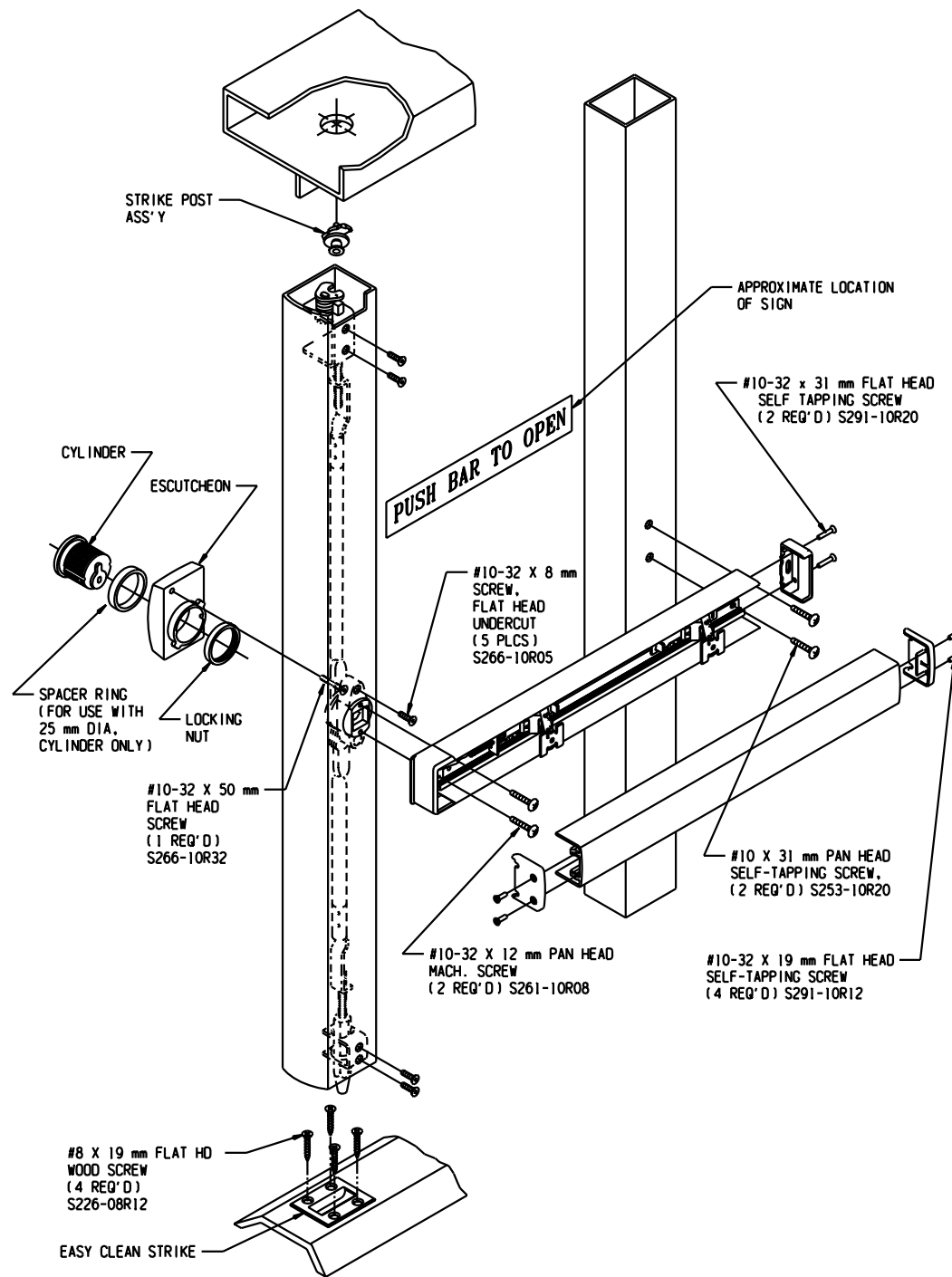
OUTSIDE CYLINDER PREPARATION

NOTE 2: WHEN USING OUTSIDE CYLINDER, DRILL 5.5 mm HOLES FOR #10-32 SCREWS BOTH SIDES AND COUNTERSINK INTERIOR ONLY.

1. DRILL ϕ 5.5 mm AND COUNTERSINK 5 HOLES FOR #10-32 FLAT HEAD SCREWS.
2. THESE DIMENSIONS AND TEMPLATES ASSUME A DOOR 44.5 mm THICK WITH 3 mm STILE WALL. DOORS WITH OTHER THICKNESS OR WALL WILL REQUIRE MODIFICATION TO THE DEVICE AND TO TEMPLATES (H) AND (F).

INSTALLATION

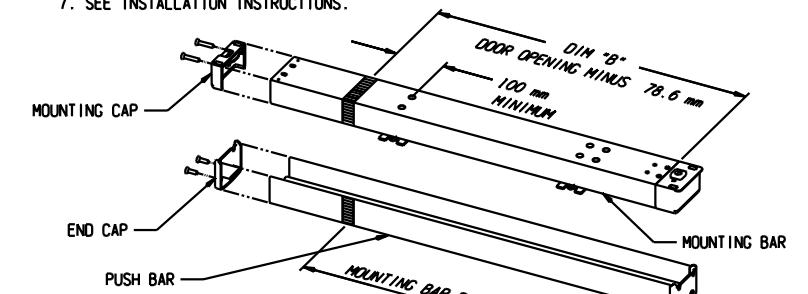
NOTE: Discard Excess Screws from Universal Package



BACKSET 26.7 mm	DOOR OPENING WIDTH (mm)				
	600	750	900	1050	1200
DIM A	529	679	829	979	1129

CUT-OFF INSTRUCTIONS FOR NON-STANDARD DOORS

1. SEPARATE PUSH BAR & MOUNTING BAR (SEE BELOW)
2. DETERMINE EXTRUSION LENGTH ("B" DIM). NOTE: 100 mm MINIMUM DIMENSION FROM END OF BACKBAR TO NEW CUT-OFF LENGTH AS SHOWN.
3. MEASURE MOUNTING BAR, TAPE AND MARK EXTRUSION LENGTH.
4. MEASURE PUSH BAR, TAPE AND MARK EXTRUSION LENGTH.
5. SAW OFF EXCESS LENGTH, REMOVE TAPE AND DEBURR.
6. DRILL MOUNTING HOLES IN BACKBAR USING DRILLING TEMPLATE 80-0180-912
7. SEE INSTALLATION INSTRUCTIONS.

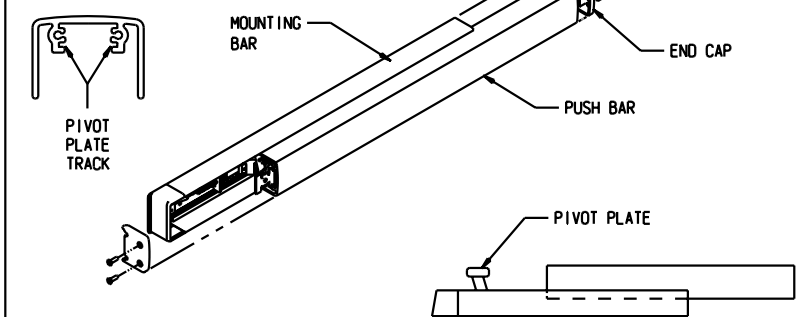


NOTE: THE FORMULA ASSUMES THAT THE APPLICATION IS A FLUSH FRAME, REBATED FRAMES NEED TO BE CONSIDERED SEPERATELY AS A DEEPER DOOR STILE MAY BE REQUIRED DEPENDING ON THE DEPTH OF THE REBATE. CONSULT THE FACTORY TO DISCUSS INDIVIDUAL REQUIREMENTS.

FIG. "C"

SEPARATING PUSH BAR AND MOUNTING BAR PROCEDURE

1. REMOVE HINGE END-BACKBAR CAP. REMOVE BOTH END CAPS.
2. SLIDE PUSH BAR TOWARD HINGE SIDE OF DOOR.
3. CONTINUE TO SLIDE PUSH BAR PAST THE PIVOT PLATE THAT RIDES IN PUSH BAR TRACK.
4. SLIDE PUSH BAR IN OPPOSITE DIRECTION KEEPING PIVOT PLATE OUT OF TRACK UNTIL PUSH BAR IS FREE OF MOUNTING BAR.



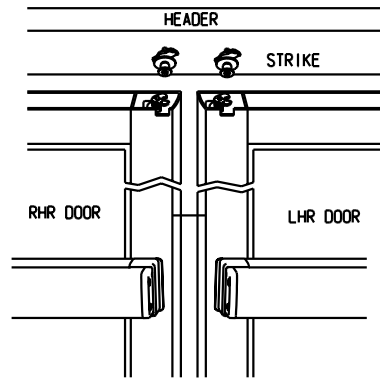
INSTALLING PUSH BAR TO MOUNTING BAR

1. WITH PUSH BAR IN HAND AND MOUNTING BAR ATTACHED TO DOOR, SLIDE THE PIVOT PLATE NEAREST HINGE INTO TRACK OF PUSH BAR UNTIL SECOND PIVOT PLATE IS EXPOSED. INSERT PIVOT PLATE INTO TRACK ON PUSH BAR AND SLIDE IN OPPOSITE DIRECTION UNTIL PUSH BAR AND MOUNTING BAR ALIGN.

PRODUCT MUST BE INSTALLED
ACCORDING TO ALL APPLICABLE
BUILDING AND LIFE SAFETY CODES

INSTALLATION INSTRUCTION CHECKLIST

ADAMS RITE
SERIES **960** EXIT
DEVICE

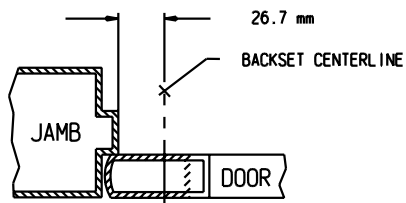


IMPORTANT!

This device is unhandled. It can be installed in either left hand reverse or right hand reverse doors without alteration. The doors' lead stile and header preparation are IDENTICAL *not* mirror image. Note in the sketch above that the yoke type bolt *always* faces right (as viewed from inside) and the strike post is toward the right of the backset centerline for *both* doors.

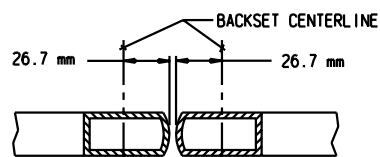
NOTE STEPS 1 THRU 9 ARE MORE EASILY ACCOMPLISHED IF DOOR IS NOT INSTALLED IN FRAME.

HOW TO FIND BACKSET



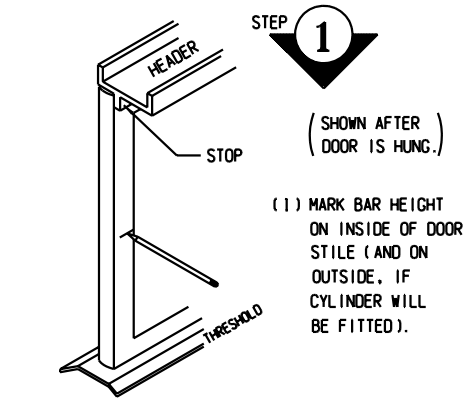
REBATED FRAME

SEE PAGE 1 FIG "C" AND NOTE

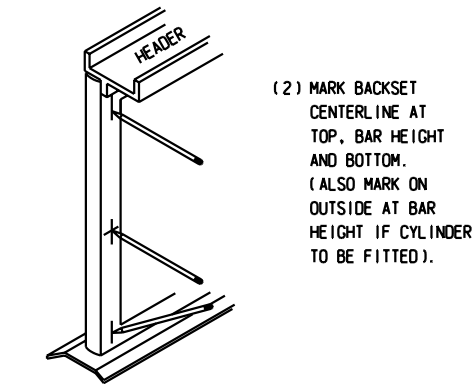


BEVEL STILE AND FLAT STILE APPLY TO SINGLE DOOR ONLY.

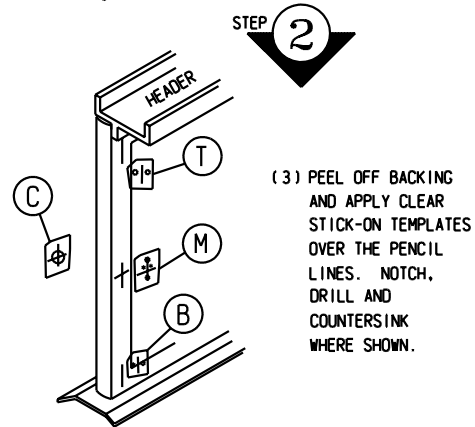
PAIR DOOR



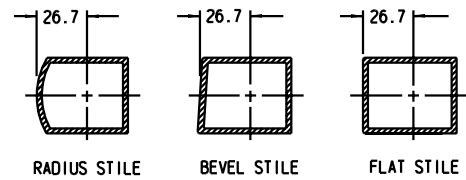
(1) MARK BAR HEIGHT ON INSIDE OF DOOR STILE (AND ON OUTSIDE, IF CYLINDER WILL BE FITTED).



(2) MARK BACKSET CENTERLINE AT TOP, BAR HEIGHT AND BOTTOM. (ALSO MARK ON OUTSIDE AT BAR HEIGHT IF CYLINDER TO BE FITTED).

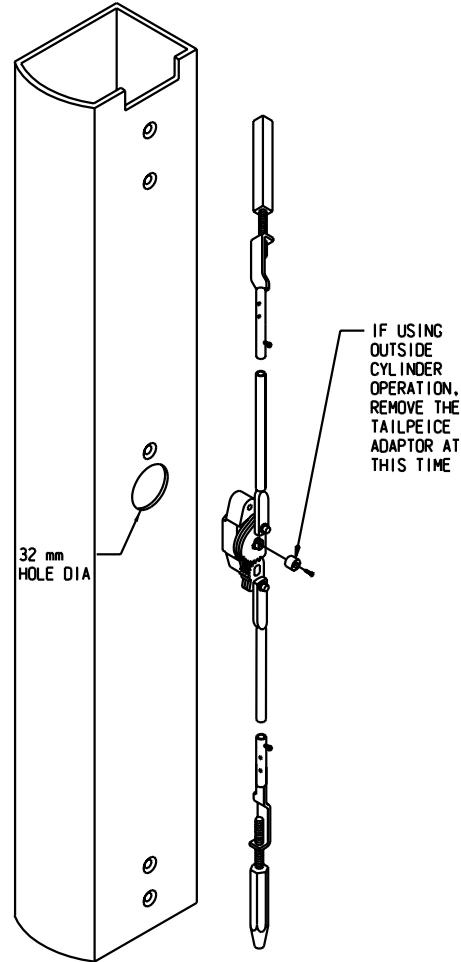


(3) PEEL OFF BACKING AND APPLY CLEAR STICK-ON TEMPLATES OVER THE PENCIL LINES. NOTCH, DRILL AND COUNTERSINK WHERE SHOWN.

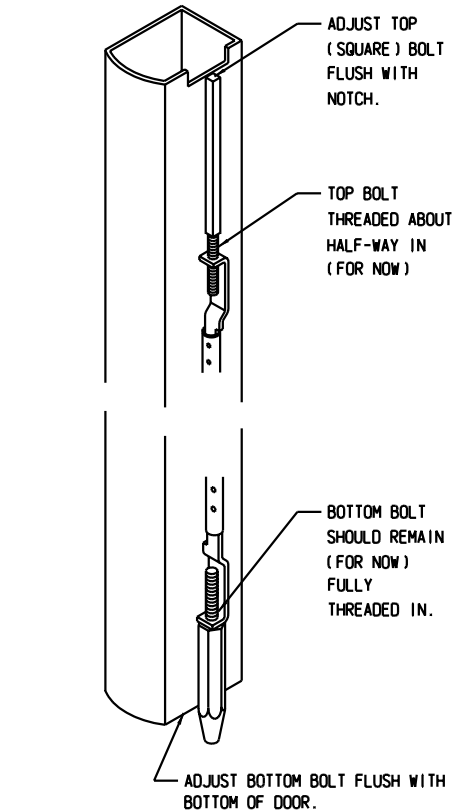
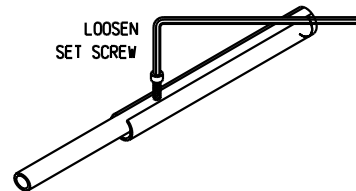


BACKSET IS MEASURED AT DOOR CENTERLINE, NOT THE EDGE.

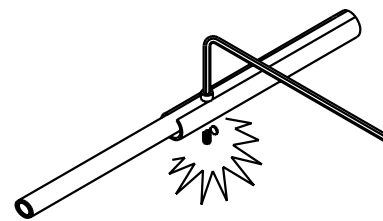
STEP 3
LAY ROD MECHANISM ON PREPARED DOOR WITH GEAR PLATES OUTWARD AND CASTING RESTING IN 31.8 mm DIAMETER HOLE IN DOOR AS SHOWN BELOW.



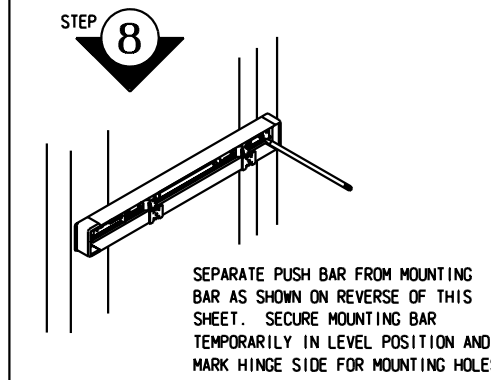
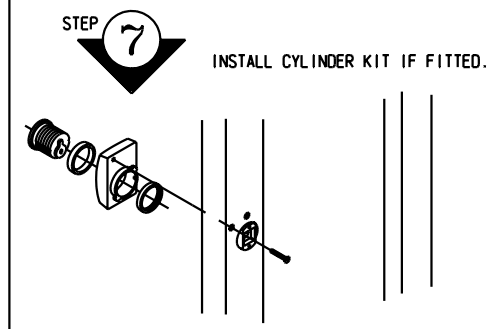
STEP 4
ADJUST RODS TO APPROXIMATE LENGTH. (ROUGH ADJUSTMENT FOR NOW)



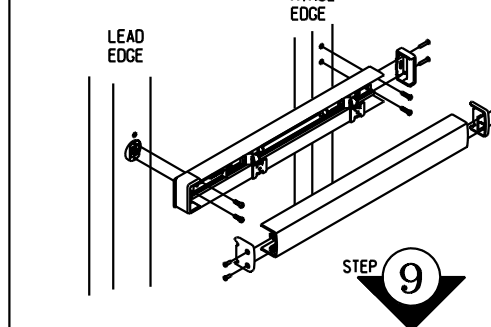
STEP 5
WHEN ROUGH ADJUSTMENT OF RODS IS CORRECT, TIGHTEN METAL-PIERCING SCREWS ALL THE WAY THRU TUBE. YES! ALL THE WAY THROUGH AND TIGHT.



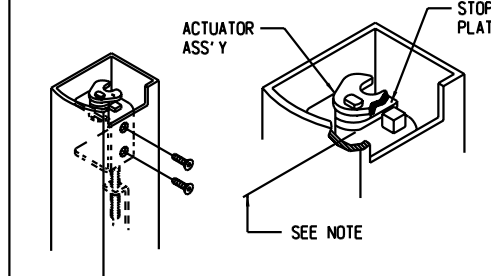
STEP 6
SLIP ROD MECHANISM INTO DOOR AND SECURE WITH SCREW. (YOU CAN USE ONE OF THE SCREWS AS A TEMPORARY HANDLE TO POSITION CASTING).



REMOVE BAR, DRILL 4 mm DIA HOLES AT HINGE EDGE. INSTALL BAR WITH TWO #10 X 1 1/4 SELF-TAPPING SCREWS AT HINGE EDGE AND TWO #10-32 X 1/2 MACHINE SCREWS AT LEAD EDGE.



INSTALL TOP BOLT ACTUATOR ASSEMBLY AND SECURE WITH TWO SCREWS. WITH ASSEMBLY IN LOCKED POSITION AND PUSH BAR RELEASED, END OF SQUARE BOLT SHOULD ENGAGE STOP PLATE AS SHOWN. (FOR FINE ADJUSTMENT, REMOVE ACTUATOR ASSEMBLY, ADJUST BOLT UP OR DOWN AND REINSTALL ASSEMBLY).



NOTE: SQUARE BOLT MUST BE FLUSH WITH TOP OF STOP PLATE.

STEP 10
INSTALL DOOR IN FRAME. MARK BACKSET CENTERLINE ON HEADER AND THRESHOLD. ALSO MARK WHERE FACE OF CLOSED DOOR RESTS. APPLY CLEAR TEMPLATES (H) AND (F) AND DRILL STRIKE HOLES.

